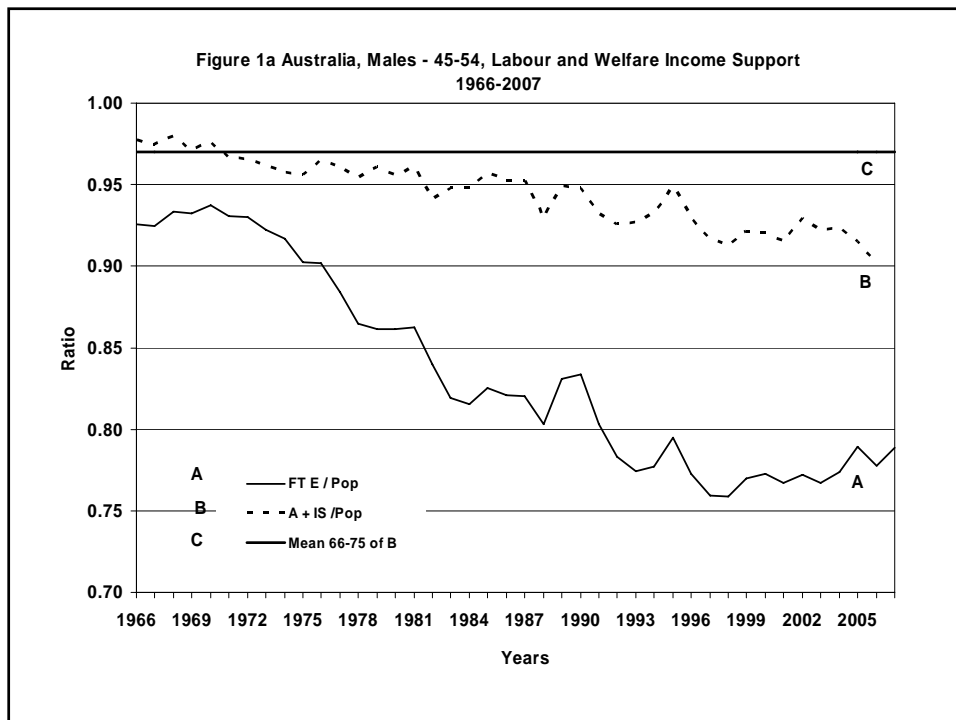
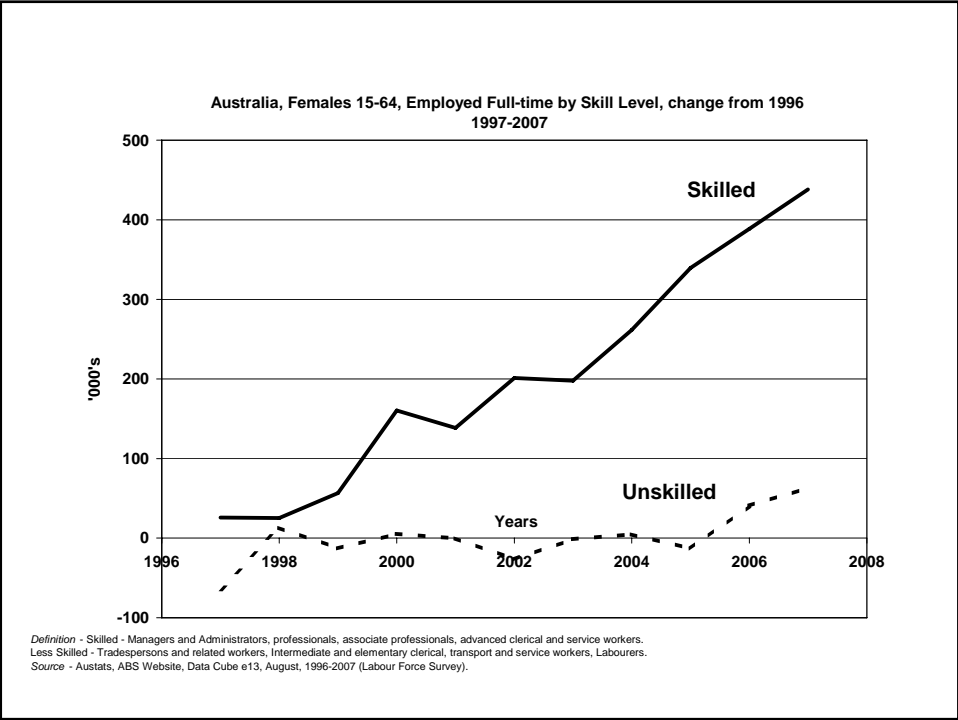
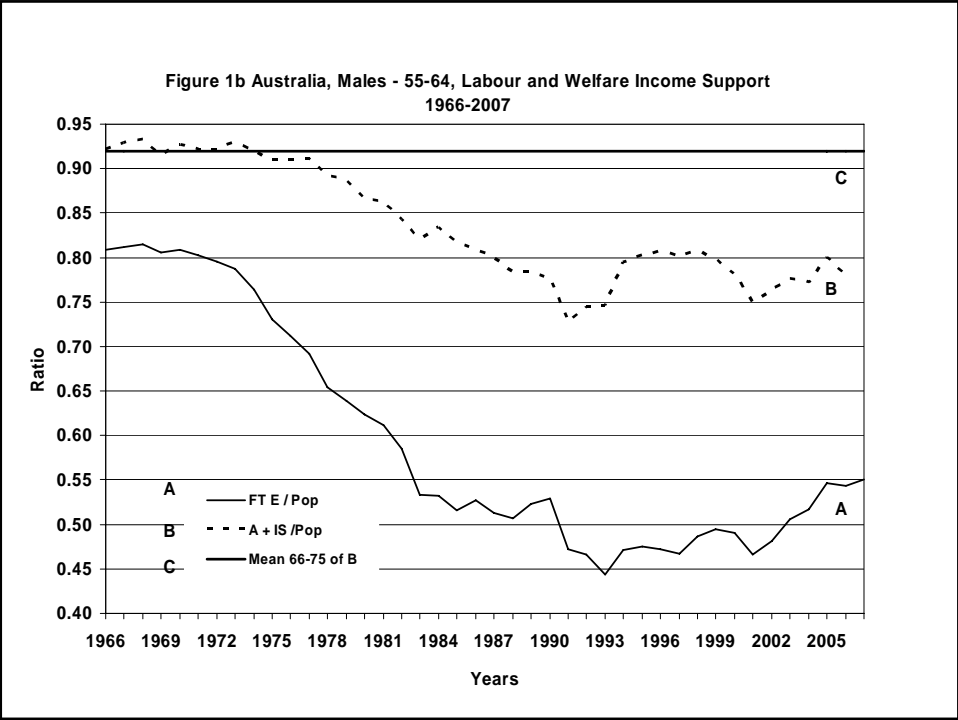
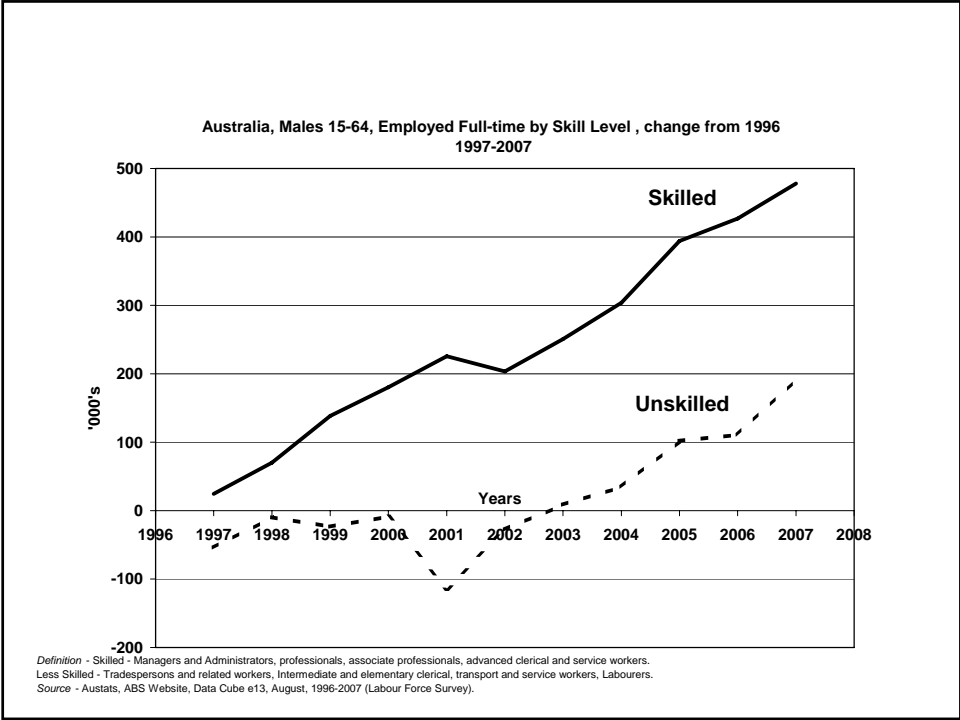


Stumbling through the Mist of the Australian Labor Market and Welfare System

R G Gregory
Economics, RSSS, ANU
2008







**Table 3 Male Age Pensioner Inflows
Percent of Total Male Age Pensioners**

Age	Year	
	1996-97	2004-05
65	77	79
66	5	6
67	3	3
68-70	7	5
71+	8	7
Total	100	100

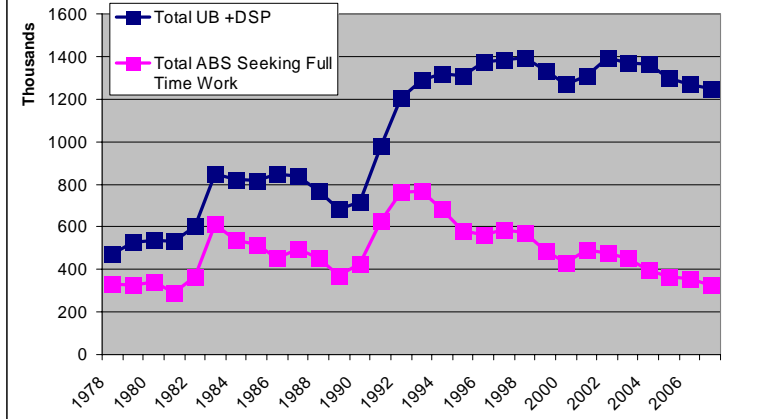
Table 4 2005 Male Age Pensioner Inflow for 65 year olds ('00's)

	Number			Percent	
	Total	Full Age Pension*	Part Age Pension*	Full Age Pension*	Part Age Pension*
Age Pension Inflow -	492	236	256	48	52
No Previous Welfare	106	14	92	13	87
Previous Welfare	386	224	162	58	42

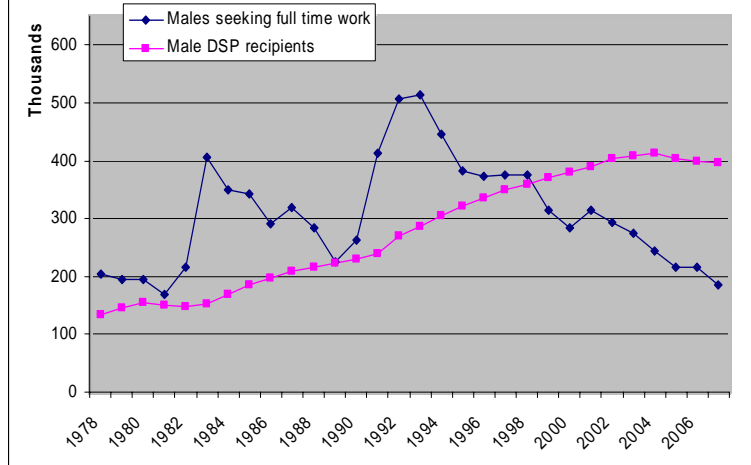
* Two months into the Age Pension.

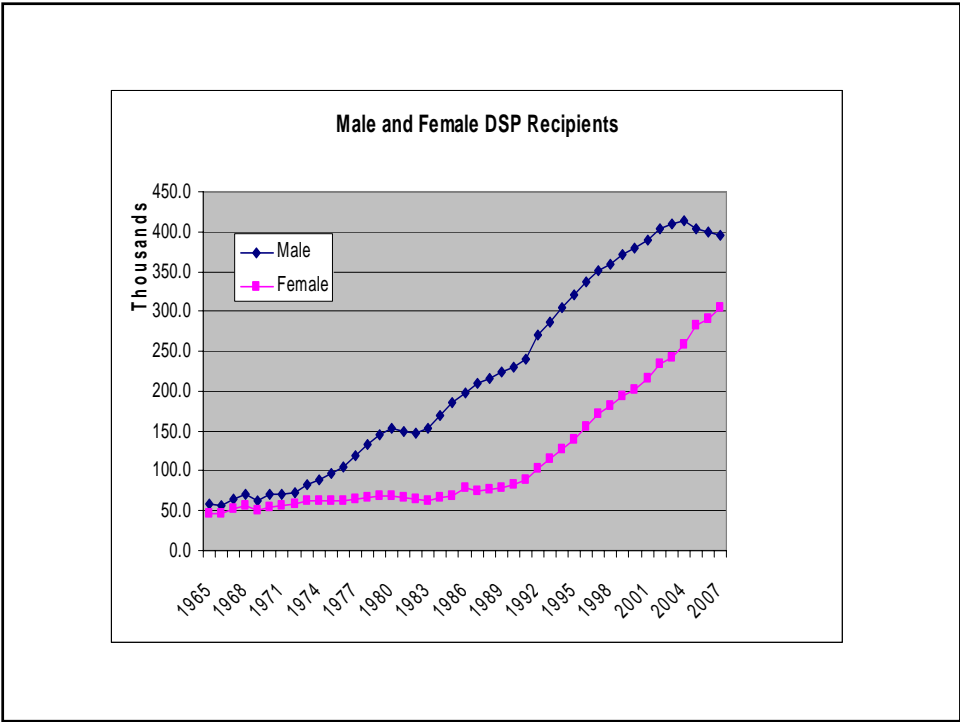
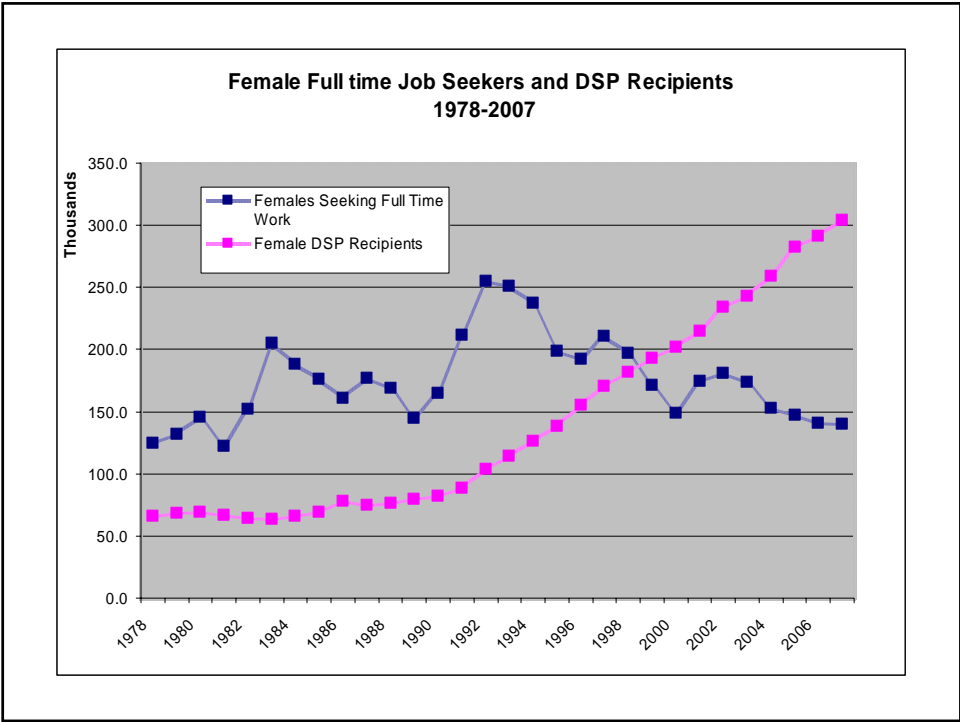
Table 1			
Disability Pensioners, Unemployment Beneficiaries and those seeking Full time Employment (ABS)			
Nov-07 000,s			
	Male	Female	Total
DSP	393 (8.0)	304 (11.5)	697 (9.1)
UB	289 (5.3)	193 (7.3)	482 (6.3)
LFS Unemploy	185 (3.7)	123 (4.6)	308 (4.0)
() per hundred full-time employed.			

**DSP+UB Total and Total ABS Seeking Full Time Work
1978-2007**



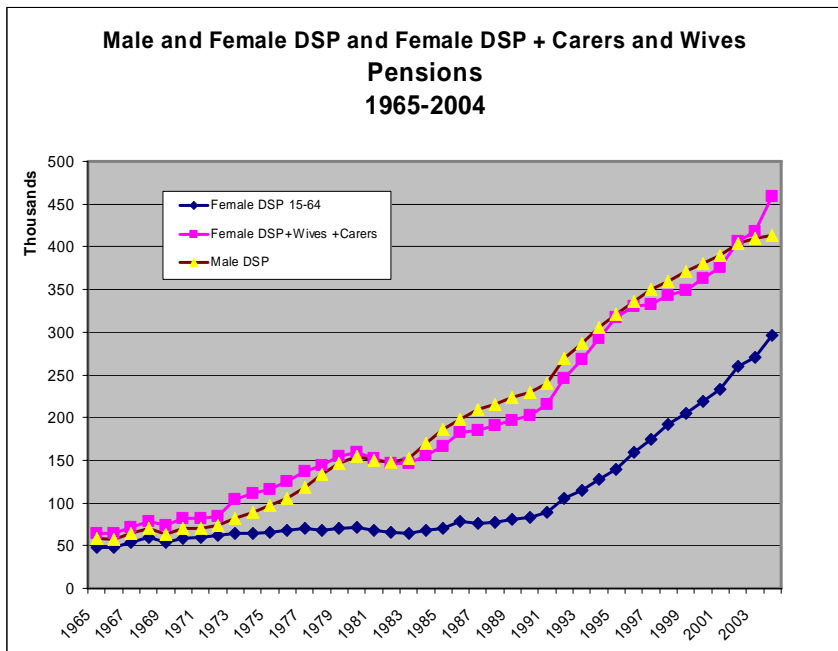
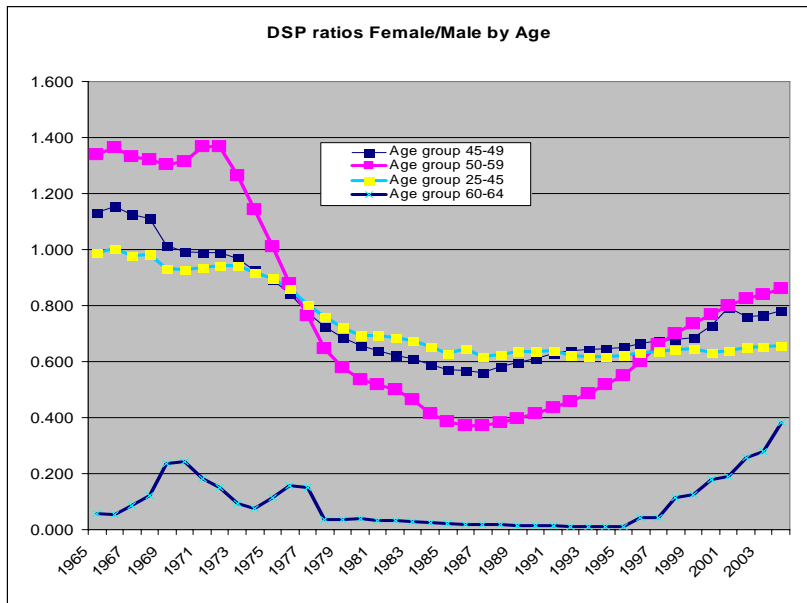
**Males Seeking Full Time Work and DSP Recipients
1978-2007**





Changes DSP Recipients and ABS Full-Time Unemployment						
	Disability			ABS Unemployment		
	Men	Women	Total	Men	Women	Total
1985-1995	135	69	204	19	29	48
1995-2005	83	137	220	-137	-44	-181
2005-2007	-9	24	15	-49	-22	-71
1985-2007	208	234	442	-167	-37	-204

An Indication of Womens Policy Initiatives and Responses						
	Policy Initiatives		Responses			
	Wife Pension	AGE DSP	DSP	Carer	UB over 50	
1985	23	74	70	3	6	
1995	40	122	139	20	23	
Change	17	48	69	17	17	
1995	40	122	139	20	23	
2004	20	33	277	84	39	
Change	-10	-88	138	64	16	



The principle focus will be on the growth of the number of Disability Pension Recipients

Table 1												
Numbers												
		Full Pension		Part Pension		Zero Over Pension		Total	Pension			
		Single	Married	Single	Married				Full	Part		
45-54												
1995	DSP	334	277	29	73	0	6	713	611	102		
	UB	297	260	29	102	34	3	688	557	131		
	MA											
2005	DSP	539	224	58	107	0	6	928	763	165		
	UB	263	107	39	44	49	10	453	370	83		
	MA											
55-64												
1995	DSP	378	829	49	210	0	14	1466	1207	259		
	UB	106	217	26	120	21	17	469	323	146		
	MA	79	189	7	42	0	1	317	268	49		
2005	DSP	696	759	76	251	0	9	1782	1455	327		
	UB	146	153	30	61	28	39	390	299	91		
	MA	51	95	11	35	0	0	192	146	46		
Percent												
		Full Pension		Part Pension				Total	Pension		Marital Status	
		Single	Married	Single	Married				Full	Part	Single	Married
45-54												
1995	DSP	47	39	4	10			100	86	14	51	49
	UB	43	38	4	15			100	81	19	47	53
	MA											
2005	DSP	58	24	6	12			100	82	18	64	36
	UB	58	24	9	10			100	82	18	67	33
	MA											
55-64												
1995	DSP	26	57	3	14			100	82	18	29	71
	UB	23	46	6	26			100	69	31	28	72
	MA	25	60	2	13			100	85	15	27	73
2005	DSP	39	43	4	14			100	82	18	43	57
	UB	37	39	8	16			100	77	23	45	55
	MA	27	49	6	18			100	76	24	32	68

We know a reasonable amount about who are the
DSP Recipients

Pensioners tend to be
older, - per cent are over 50 years of age,
remain on the DSP for a long time, perhaps an
average of twelve or so years.

Once they enter they rarely leave.
the main exit is the old age pension, the second main
exit is route is death

We do not know why the
numbers have grown so much

The main points are as follows

- They all die
- To bad really
- Dso what

Two major 1995 policy initiatives

- Wife pension abolished for new inflows
- Pension age for women to increase from 60 to 65 years between 1995 and 2013
- These initiatives largely offset by women moving to other welfare payments