

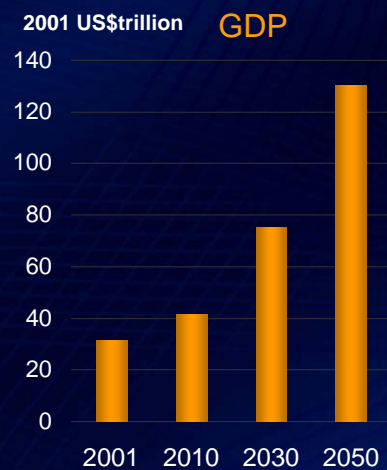
ACESA2006 EMERGING CHINA: INTERNAL CHALLENGES AND GLOBAL IMPLICATIONS
13 - 14 July, Melbourne

Energy demand in China: consequences for climate change

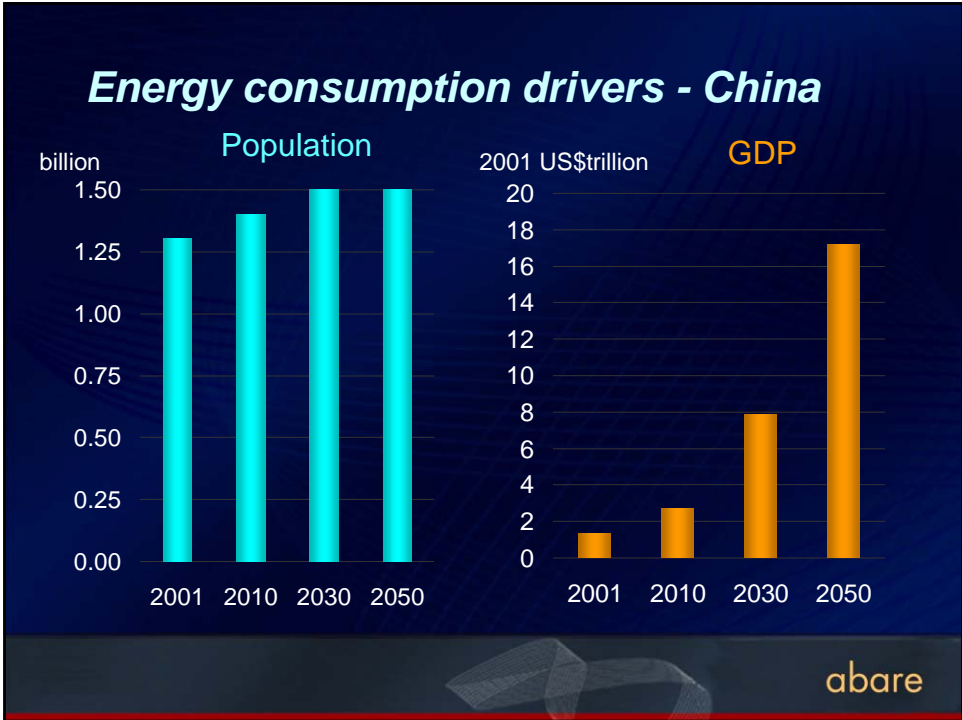
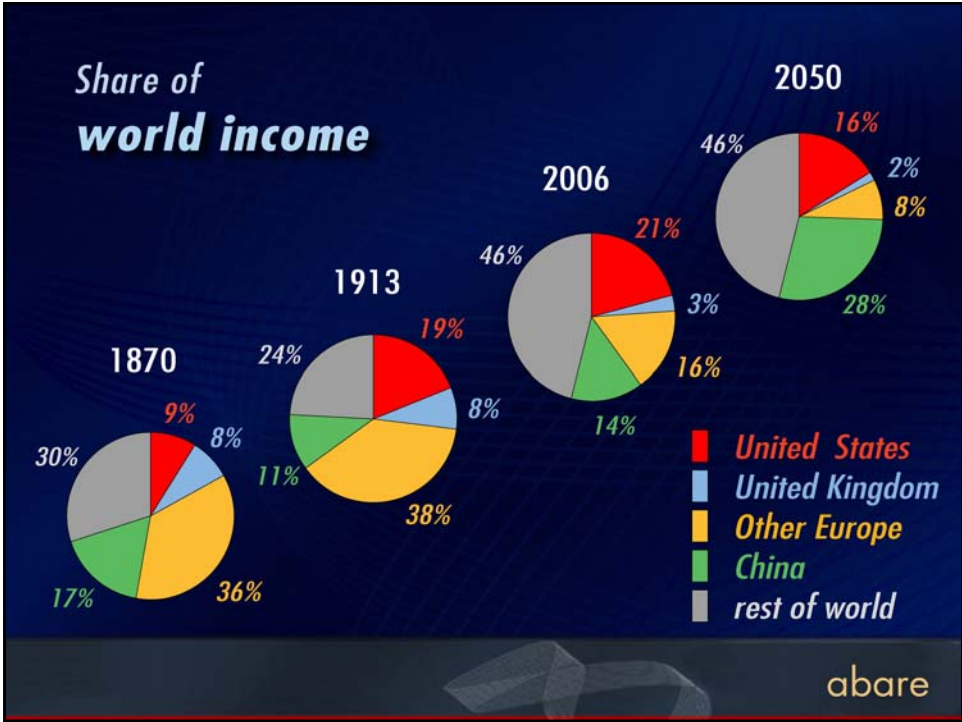
Dr Brian Fisher
Executive Director, ABARE

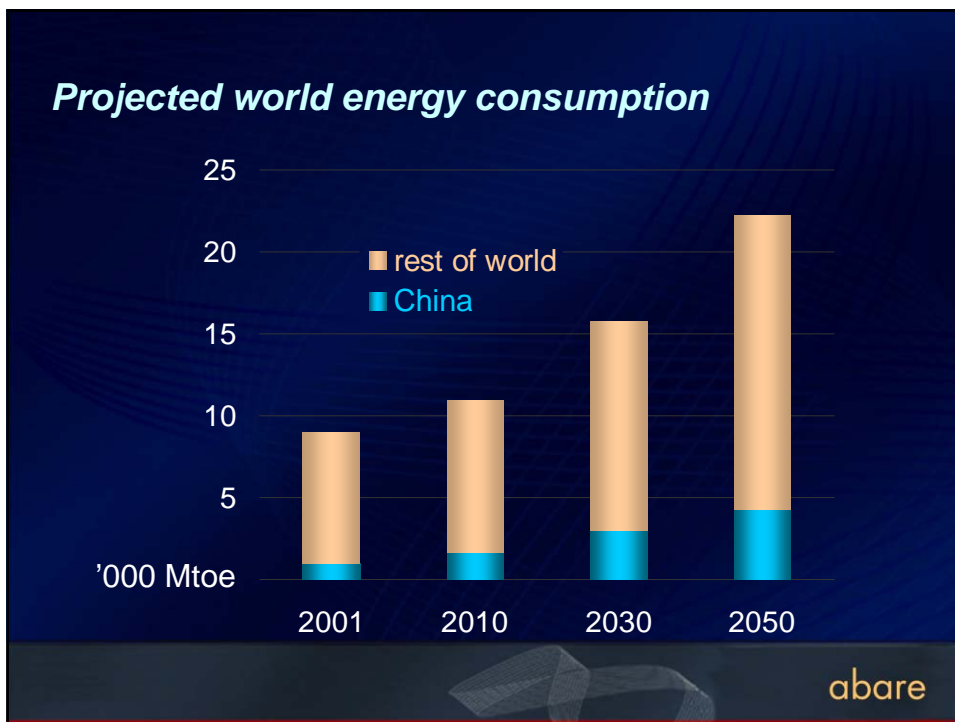
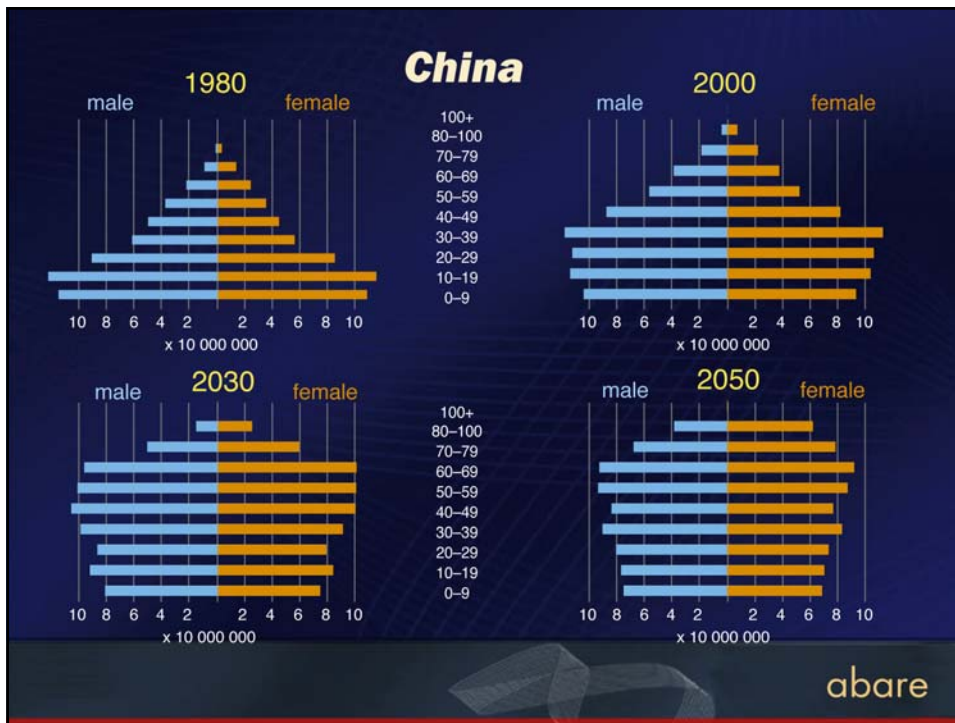
abare

Energy consumption drivers - world

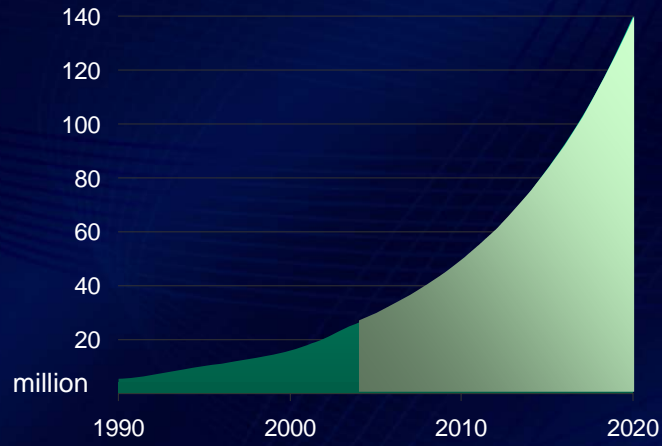


abare



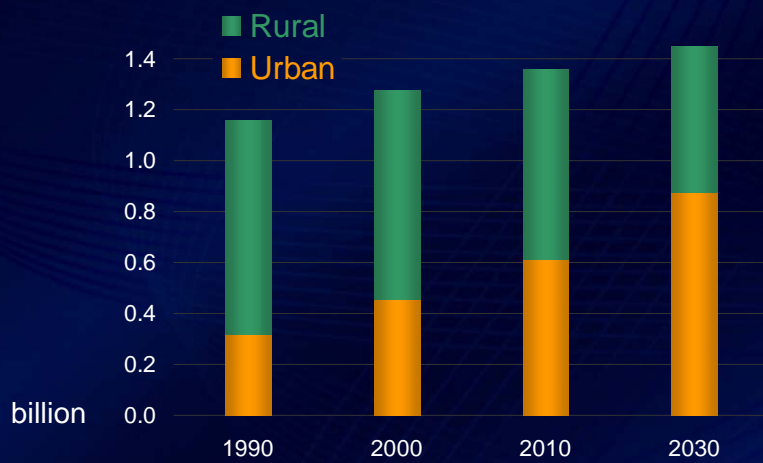


China: projected growth in vehicles



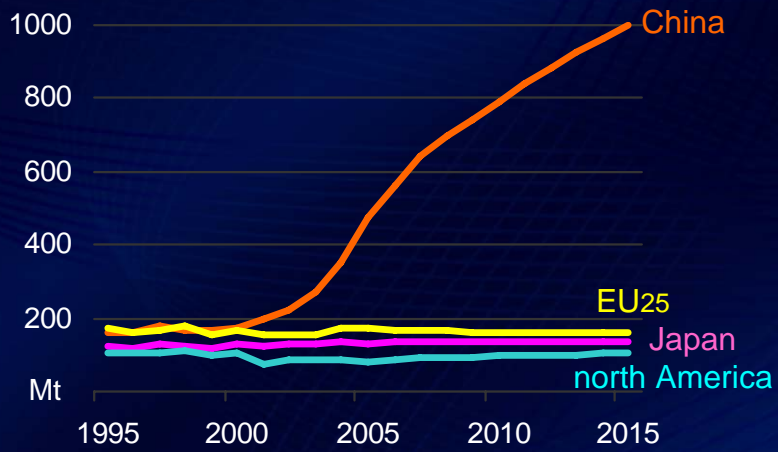
abare

Urbanisation in China



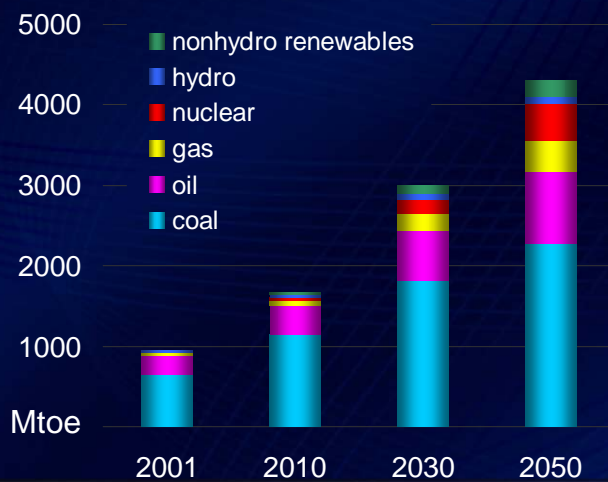
abare

China dominates world iron ore consumption

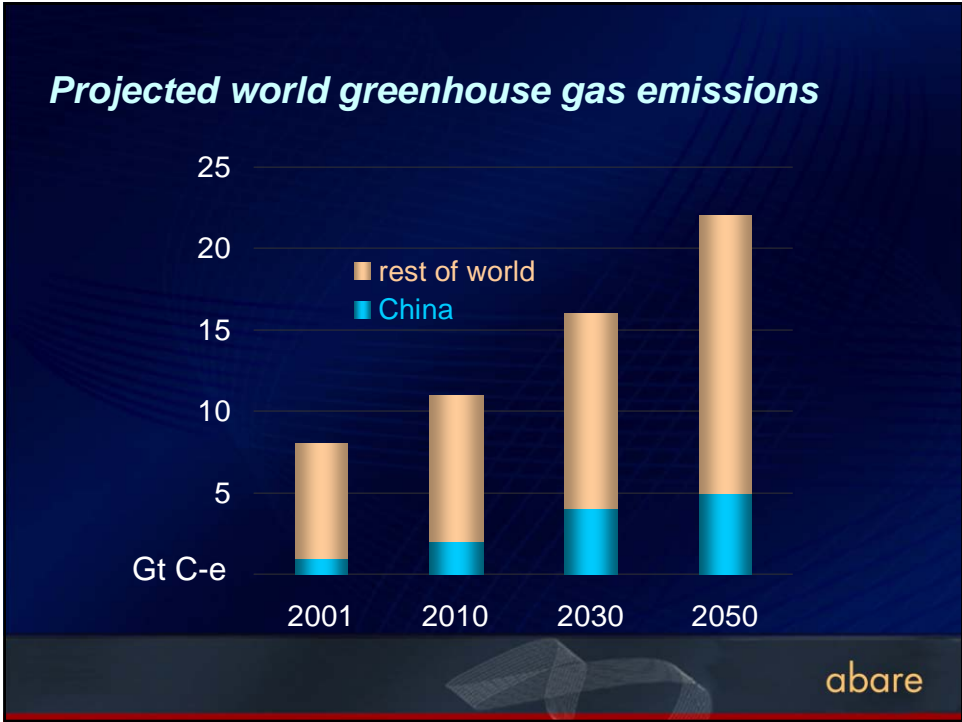
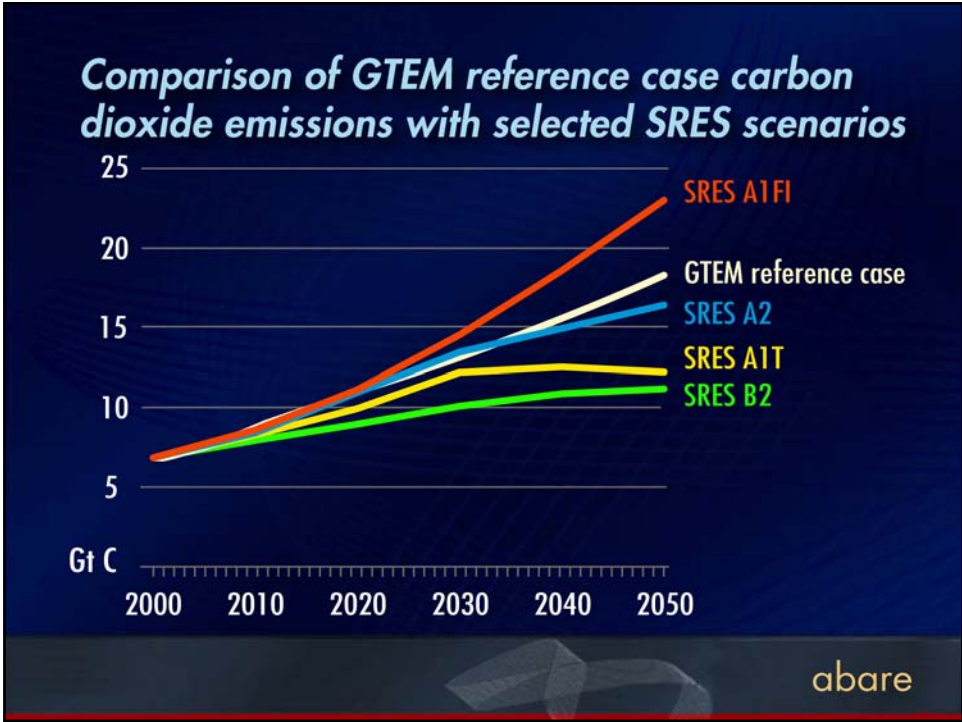


abare

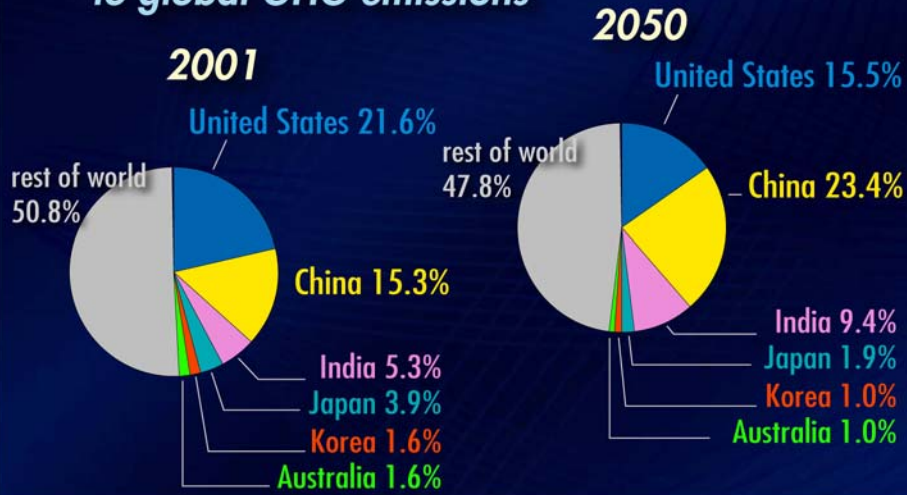
China's projected energy consumption, by fuel



abare



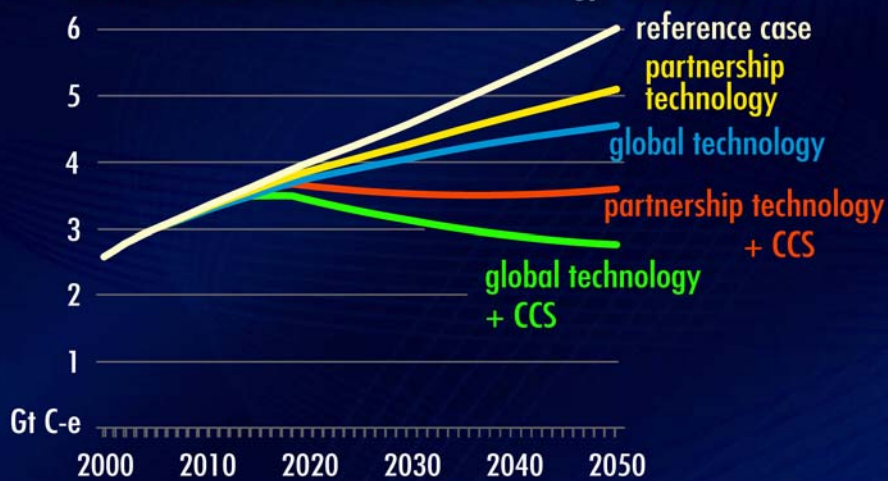
Partnership contribution to global GHG emissions



abare

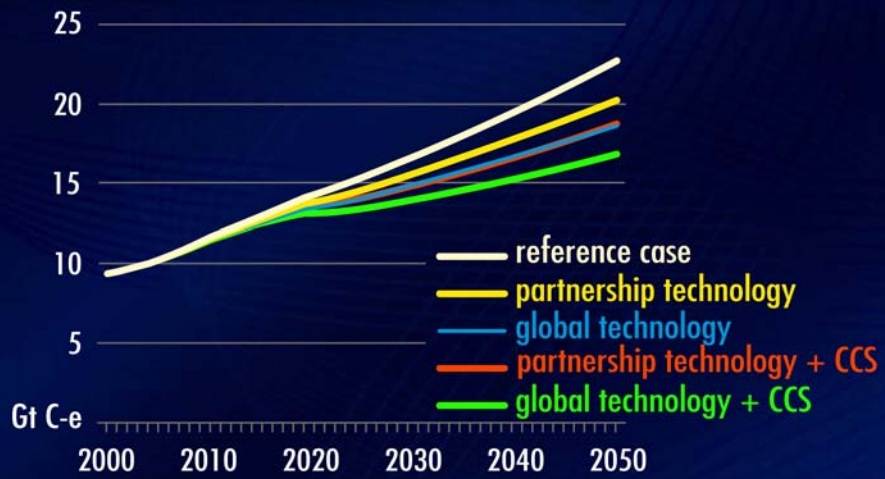
Global electricity sector emissions

reference case and enhanced technology scenarios



abare

Global greenhouse gas emissions reference case and enhanced technology scenarios



abare

www.abareconomics.com

abare